



24/7 MONITORING | VIDEO SURVEILLANCE | INSTALLATION | PATROL

Boyd Bugle

BOYD & ASSOCIATES
800.381.BOYD www.boydsecurity.com

Winter 2022

Quarterly Dispatch

Thank you for your business!



As we approach the end of 2022, we want to personally take this time to let you know how grateful we are for the trust you have placed in us over the years.

Since 1967, Boyd & Associates, the largest family-owned security company in Southern California, has been providing total security for homes and businesses of every size and type.

Our commitment to you remains the same. We promise to provide exceptional customer service, 24/7 monitoring and clear communication about advances in the security industry.

TEST YOUR SECURITY SYSTEM TODAY TO ENSURE A SAFE TOMORROW

Periodic testing of your alarm system is essential to ensure proper functionality. We recommend testing your system monthly.



- Call our 24-hour Central Station at 1-800-381-2693 and advise the dispatcher that you are going to test your system. Be prepared to give your password.
- Arm your alarm.
- Open all protected doors and windows. Walk through the motion detectors.
- Let the alarm siren ring for one full minute from the time you begin the test to be certain our Central Station has received the signal.
- Call our Central Station at the completion of your test to confirm that all signals were received.
- Advise our Central Station when you have concluded the testing of your alarm system.
- If any zone did not signal, we suggest you request a service call.

Put A FREEZE on Winter Holiday Fires

It's fun to decorate for the holidays, but holiday decorations can increase your risk for a home fire. As you deck the halls this season, be fire smart.



Half of the home decoration fires in December are started by candles.



More than 1/3 of home decorations fires are started by candles.



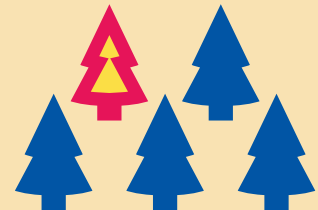
Christmas is the peak day for candle fires.



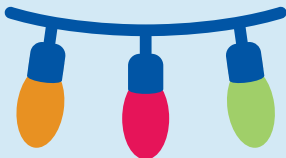
Keep candles at least 12 inches away from anything that burns.



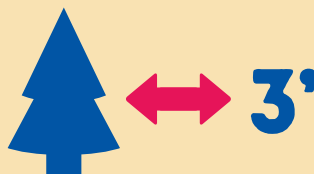
A dry Christmas tree can burn very hot and very fast.



More than 1 in every 5 Christmas tree fires were caused by a heat source too close to the tree.



Read manufacturer's instructions for the number of light strands to connect.



Make sure your tree is at least 3 feet away from heat sources like fireplaces, radiators, space heaters, candles or heat vents. Also, make sure your tree does not block exits.



Get rid of your tree after Christmas or when it is dry.

GET ONE MONTH OF FREE MONITORING WHEN YOU LEAVE A GOOGLE REVIEW

Leave us a review on Google and receive 1 month of monitoring on us.

For details, please visit our website at www.boydsecurity.com and click the "Leave Us a Review" tab.